

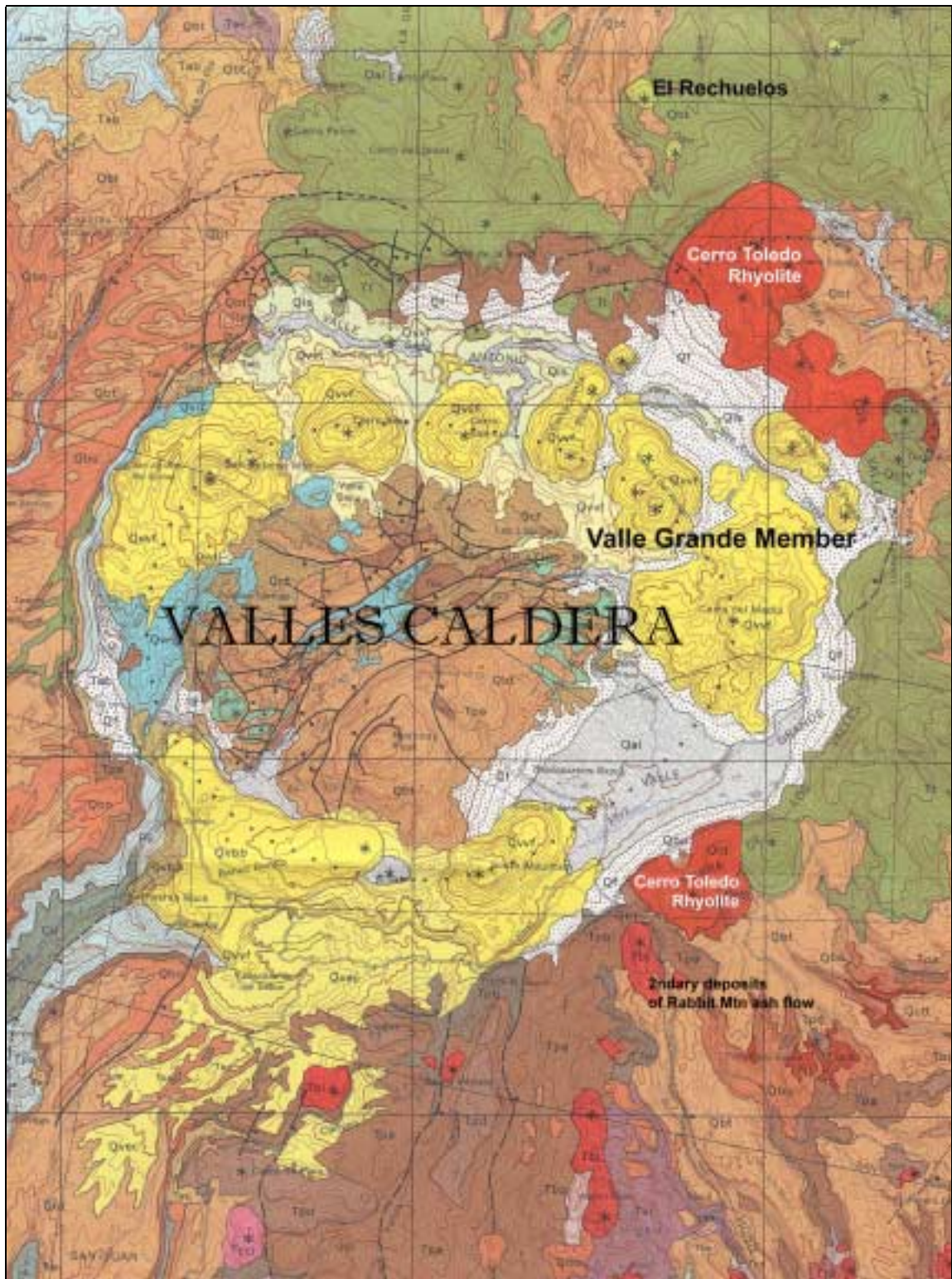
THE SOUTHWEST ARCHAEOLOGICAL OBSIDIAN PROJECT IN THE NORTHERN REGION

M. Steven Shackley, Director
Archaeological XRF Laboratory
103 Kroeber Hall
University of California
Berkeley, CA 94720-3712
(510) 643-1193, ext. 3
shackley@sscl.berkeley.edu
<http://obsidian.pahma.berkeley.edu>

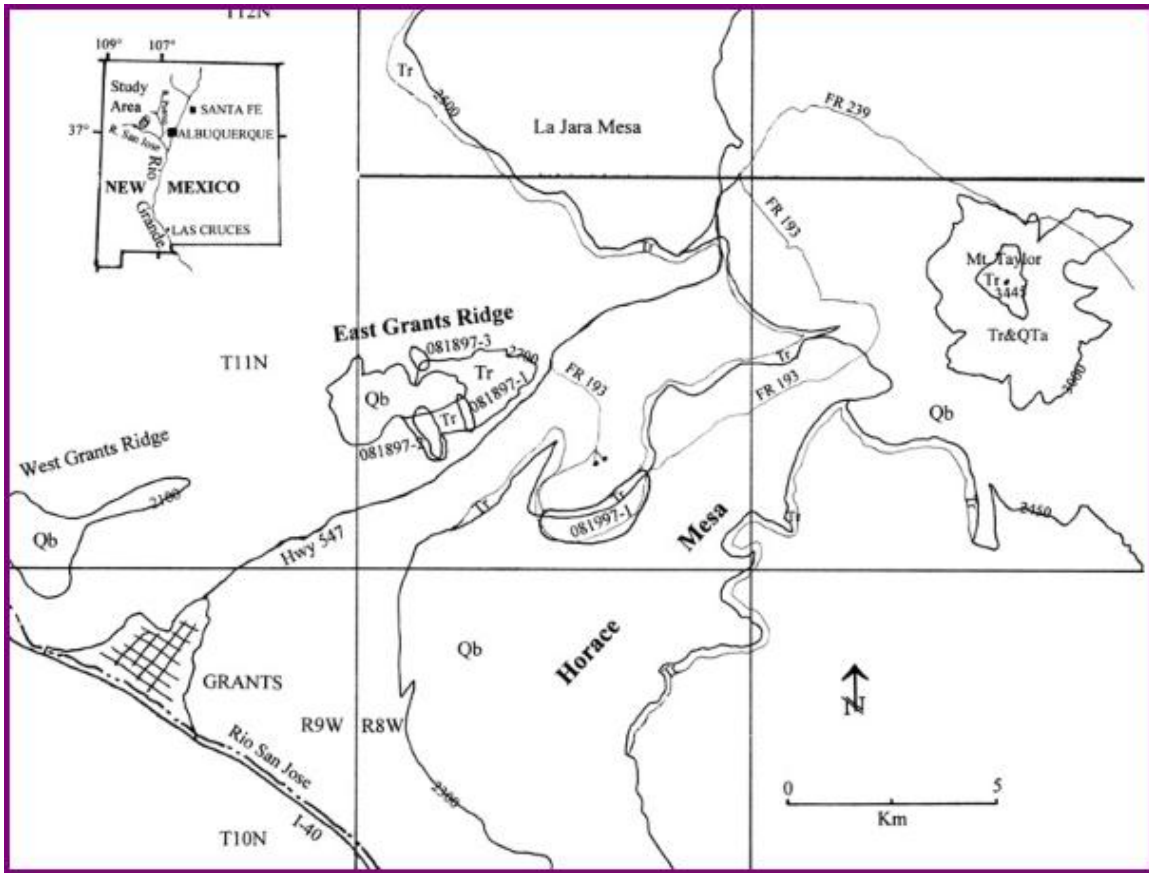


Workshop for the
73rd Pecos Conference
Mesa Verde National Park, Colorado

August 2000



Jemez Mountains, Valles Caldera, and current study areas (from Smith et al. 1970).



Selected topographical and geological map of the Mount Taylor study area. Contours are approximate, but accurate at points noted. All measurements in meters. Tr = Plio-Pleistocene rhyolite; Qb=Quaternary basalt; Qta=Quaternary andesite. Collection localities noted by date/sample number (i.e. 081897-1). Fr=Forest Road. From Shackley 1998a.

SELECTED RECENT (1998-2000) ARCHAEOLOGICAL OBSIDIAN PROJECTS IN THE NORTHERN SOUTHWEST

<u>Project/Location</u>	<u>Time Period(s)</u>	<u>Sample size (n)</u>	<u>Organization/PI</u>	<u>Sources Present</u>
Pecos Nat. Hist. Park	Late Archaic-Contact	150	NPS/J. Cunningham	Cerro Toledo Rhy., Valle Grande, El Rechuelos, Bland Canyon, Mount Taylor, Paliza Canyon
Socorro Co., NM (N55 data recovery)	Late Archaic-PIII	62	ZCRE/Dello-Russo	Cerro Toledo, Valle Grande, El Rechuelos, Mount Taylor, Govt. Mtn.
Bandelier, Nat. Mon.	Classic-Coalition	36	NPS, Heating Study/M. Ensey	Cerro Toledo Rhyolite
Rio Grande gravels (ABQ)	geological, Quat. gravels	15	UNM/P. LeTourneau	Cerro Toledo Rhyolite, No Agua
Bluff Great House, Bluff, UT	PII, Chacoan	2	Univ. CO, C. Cameron	Cerro Toledo Rhyolite
Yellowjacket Pueblo, CO, Crow Canyon	PII-III	22	Crow Canyon/Arakawa	Valle Grande, El Rechuelos, Cerro Toledo Rhyolite
Largo-Gallina	PII-III	62	Univ. Auckland/R.	Valle Grande, El Rechuelos

<u>Project/Location</u>	<u>Time Period(s)</u>	<u>Sample size (n)</u>	<u>Organization/PI</u>	<u>Sources Present</u>
NM 44-North Data Recovery, northwest, NM	Middle Archaic	15	Cibola Research/M. Marshall	Valle Grande, El Rechuelos
N 55(2) Project, Cibola Co., NM	Middle Archaic-PIV	30	ZCRE/Dello-Russo	Cerro Toldedo Rhy., Gwynn/Ewe Canyn, Mount Taylor, Red Hill, Valle Grande
Chevron Arch. Project, North. AZ	various	30	UVA/Plog& Devers	Government Mountain (all)
Wupatki Arch. Project, N AZ	Early Ceramic-AD 1150	40	Desert Arch./M. Elson	Govt. Mtn, O'Leary Pk., Partridge Cr., Presley Wash, RS Hill/Sitgreaves, unknown
La Plata Hwy Project, NW, NM	PII-III	25	Mus. NM/H.W. Toll	Valle Grande, El Rechuelos, Cerro Toledo Rhy.
N9, McKinley Co., NM	various	43	SWCA, Flagstaff/D. Gilpin	Mount Taylor, Valle Grande, El Rechuelos, Cow Canyon, Government Mtn
Clines Corner Proj., N Cent. NM	Archaic-AD 1500	7	ENMU/D. Batten	Valle Grande, El Rechuelos, Cerro Toledo Rhy.
Rolling Rock Site, N AZ	Cohonina, AD 700-1500	10	MNA/D. Wilcox	Government Mtn., RS Hill/Sitgreaves, Frenchy Hill
Boca Negra Wash & Rio Rancho	Paleoindian (Folsom)	6	Maxwell Mus., UNM/B. Huckell	Valle Grande, Mount Taylor
Aztec Nat. Mon.	PII	13	NPS/T. Windes	Valle Grande (11), Cerro Toledo Rhy. (2)
Chaco Cult. Nat. Historic Park	PI-III	506	NPS-SWP&M/T. Windes	Mount Taylor(73.9%), Valle Grande (13.1%), Bland Cnyn(4.2%), Cow Canyon(3%), El Rechuelos(2.8%), Cerro Toledo Rhy.(2.2%), unknown(0.6%), Government Mtn(n=1)

Selected Lab Reports and Publications:

Bayman, J.M., and M.S. Shackley 1999 Dynamics of Hohokam obsidian circulation in the North American Southwest. *Antiquity* 73:836-845.

Shackley, M.S. 1998a Geochemical differentiation and prehistoric procurement of obsidian in the Mount Taylor Volcanic Field, Northwest New Mexico. *Journal of Archeological Science* 25:1073-1082.

Shackley, M.S. 1998b Intrasource chemical variability and secondary depositional processes: lessons from the American Southwest. In M.S. Shackley (ed.) *Archaeological Obsidian Studies: Method and Theory*, pp. 83-102. Advances in Archaeological and Museum Science 3. New York: Kluwer Academic/Plenum Publishers.

Shackley, M.S. 1999 Source provenance of archaeological obsidian from prehistoric sites in the Gallina Region, northwest New Mexico. Report prepared for Roger Green, Department of Anthropology, University of Auckland.

Shackley, M.S. 2000 Source provenance of obsidian artifacts from prehistoric contexts in Chaco Culture National Historic Park, Northwestern New Mexico. Report prepared for National Park Service, Chaco Culture National Historic Park, Nageezi, New Mexico.

White, D.A. 1999 *Characterization of Archaeological Obsidian from Pecos Pueblo, New Mexico*. Senior Honors Thesis, Department of Anthropology, University of California, Berkeley.